



Version 7.0

*Installation Guide*

**Contents:**

- ❖ Introduction
- ❖ How It Works?
- ❖ System Requirements
- ❖ Downloading
- ❖ Installation

***Spearhead Infotech Systems Pvt. Ltd.***

D-606, 4<sup>th</sup> Floor, Vashi Plaza, Sector 17

Sector 17., Vashi, Navi Mumbai- 400705.

Tel- 91 22 27894387/ 2789 5727 / 4013 4387

Email: [suport@spearmail.com](mailto:suport@spearmail.com) Website : [www.spearmail.com](http://www.spearmail.com)

## Introduction:

SpearMail is the simplest e-mail server to implement and manage as far as Small to Medium enterprises is concerned. It helps set up a comprehensive e-mail solution similar to that deployed at large corporate firms at a fraction of the price.

SpearMail is a Mail Server that allows Organisations to set up a messaging system in their Organisations. The messaging system will ensure that

- ✓ Every user has a separate and private e-mail address
- ✓ Users can send and receive e-mail right from their desktop, without dialling out each time
- ✓ Users can send mail within the Organisation as well as to the external world.

SpearMail also has a host of features, which enables Organisations to set up a powerful and cost effective mailing system in their organisations.

Note:

SpearMail is not an e-mail client. This means user cannot read and write mail-using SpearMail. Users need to use any standard e-mail client like Microsoft Outlook, Outlook Express, Netscape, Eudora to read and write mail.

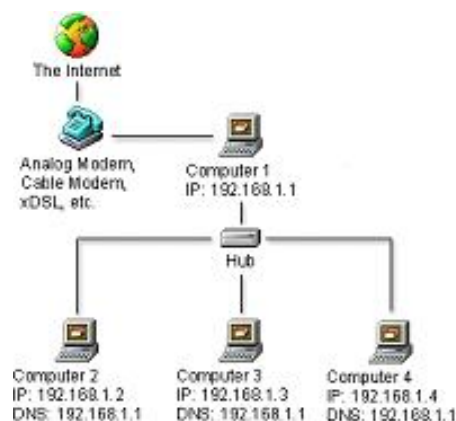
SpearMail is a post office for Internet mail clients. Mails sent by the users will be collected by SpearMail and sent out as and when it is scheduled to automatically dial out. SpearMail will also receive the mail addressed to your organisation, store in its database and pass it on to the clients as and when there is a request.

## How it Works?

With only one computer, one Internet account and only one Internet connection any organization can expand the capabilities of their network into a full online presence. Any Internet connection can be used.

Workstations can run any Windows operating system that supports TCP/IP. SpearMail 7.0 can be installed on Windows XP/Vista/ 7 / 2003 / 2008

**NOTE:** SpearMail 7.0 supports the amount of users licensed. If you have a 10 user license you will only be able to create 10 mailboxes.



## System Requirements:

### Operating System

- Windows® 2000 + MSIE 6 + IIS 5.0
- Windows® XP + MSIE 6 + IIS 5.1
- Windows® Server 2003 + MSIE 6 + IIS 6.0
- Windows® Vista + MSIE 6 + IIS 7.0
- Windows® 7 + MSIE 6 + IIS 7.0
- Windows® Server 2008 + MSIE 6 + IIS 7.0

### CPU

- Pentium IV and Above

### Memory

- 1 GB and Above

### Additional Notes and Requirements

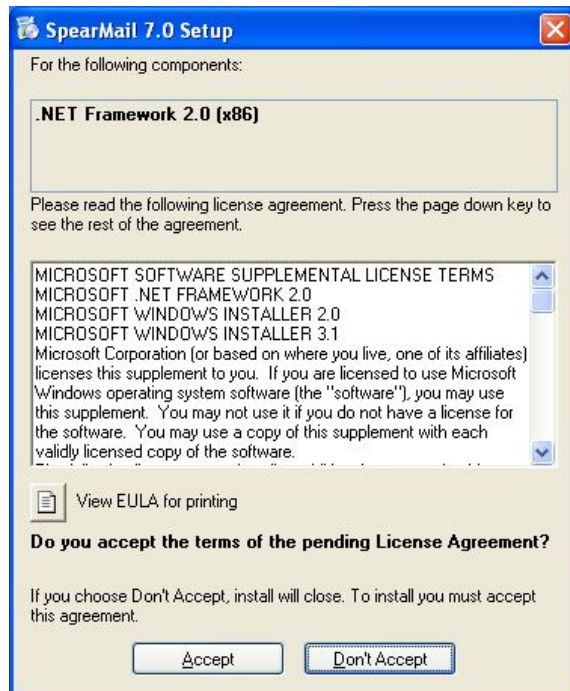
- You must have a properly operating TCP/IP network in order to use SpearMail 7.0.
- Microsoft Internet Explorer 6.0 or later is required to use all features.
- Internet Connection - If SpearMail is used to send and receive Internet mail then you must have Internet Connectivity via Dial-up or Cable/DSL or Leased Line.

## Downloading

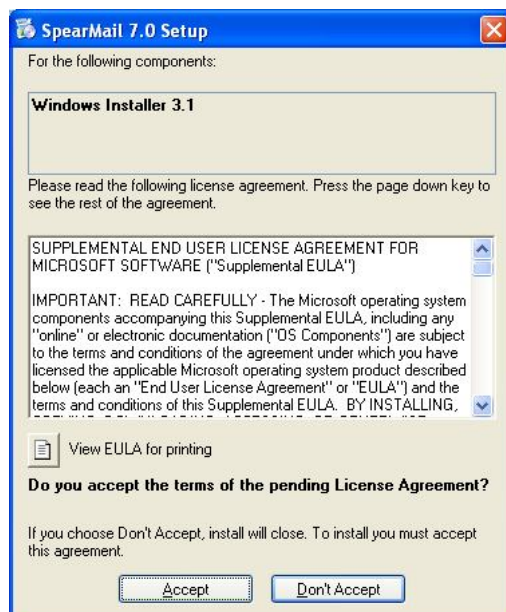
You can download SpearMail 7.0 from <http://www.spearmail.com> anytime. When downloading from this location you will always receive the most recent release of SpearMail 7.0

## Installation

1. Place the SpearMail Installation CD-Rom into your CD-Rom Drive.
2. From Windows Explorer select the folder '**Setup**'
3. Double-click on the setup.exe file found in the '**Setup**' directory. This will then start the installation of SpearMail 7.0
4. In next step it will ask to you "Accept" License Agreement, click on "Accept" for installing .NET Framework 2.0



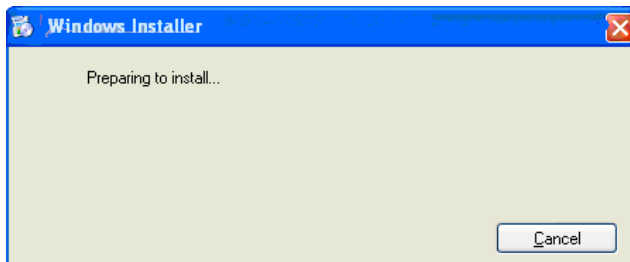
5. In next step it will ask to you "Accept" License Agreement, click on "Accept" for installing Windows Installer 3.1



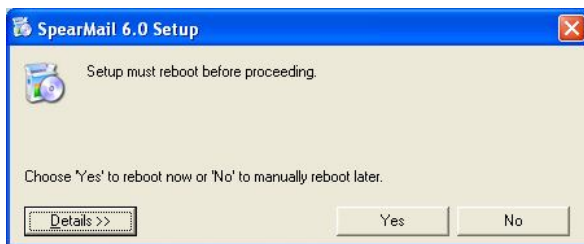
6. In next step it will start installing .NET Framework 2.0



7. In next step it will start installing Windows Installer 3.1



8. In next step it may ask you to reboot the system



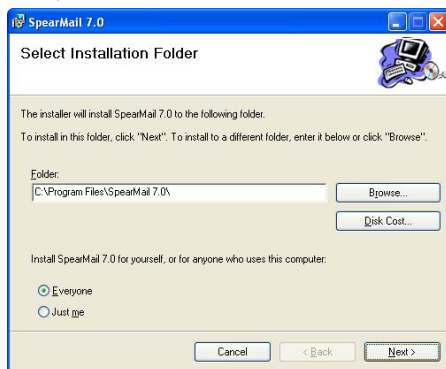
9. After rebooting System it will start installation of SpearMail 7.0



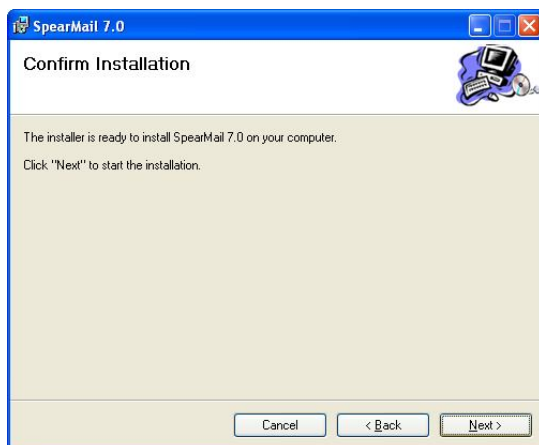
10. In next step it will ask you to ask License Agreement



11. In next screen it will ask you to select Destination Folder. By default it will be installed in c:\program files\SpearMail 7.0 directory. To install in another directory click on Browse and select the folder. Once you choose the folder click on Next



12. In next screen setup will give confirmation message that SpearMail 7.0 installation has been completed as shown in below screen.



13. Then after it will show confirmation message screen that SpearMail 7.0 has been successfully installed. Click on Finish.

Now you have successfully installed SpearMail 7.0