



Version 7.0

Migration Guide

Spearhead Infotech Systems Pvt. Ltd.

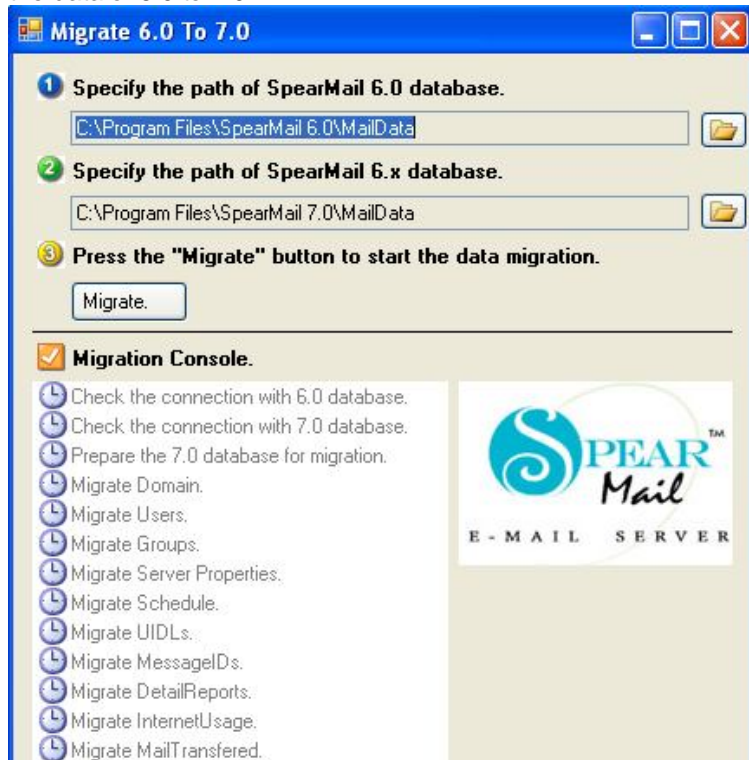
D-606, 4th Floor, Vashi Plaza, Sector 17
Sector 17.,Vashi, Navi Mumbai- 400705.
Tel- 91 22 27894387/ 2789 5727 / 4013 4387
Email: suport@spearmail.com Website : www.spearmail.com

"SpearMail" Sets up Complete Messaging System

SpearMail 7.0 Migration Guide

This will help you to migrate SpearMail 6.0 to SpearMail 7.0.

1. Shutdown SpearMail 6.0
2. Copy Maildata folder to another place
3. Uninstall SpearMail 6.0
4. Install SpearMail 7.0 (**Do not start it**)
5. Run Migrate.exe from CD , Give path of SpearMail 6.0 database folder and click on Migrate. This will migrate all the data of 6.0 to 7.0



6. Then copy contents of maildata folder without data.mdb to c:\program files\spearmail 7.0 folder
7. Start SpearMail 7.0
8. Check following service are running in task manager or not
DistributorService.exe
MailClientService.exe
POPSvc.exe
SMTPService.exe
Spearmail.exe

There will not be any changes in users Outlook configuration

In case of any query pls. feel free to write to us at support@spearmail.com or call us at 022-27894387/ 5727 / 4013 4387

Thanks and Regards,

Spearhead Support Team
Messenger :
Yahoo - spearhead_helpdesk@yahoo.com
GTalk – spearmail@gmail.com